

Coaxial Directional Couplers for UHF-VHF

CD Series

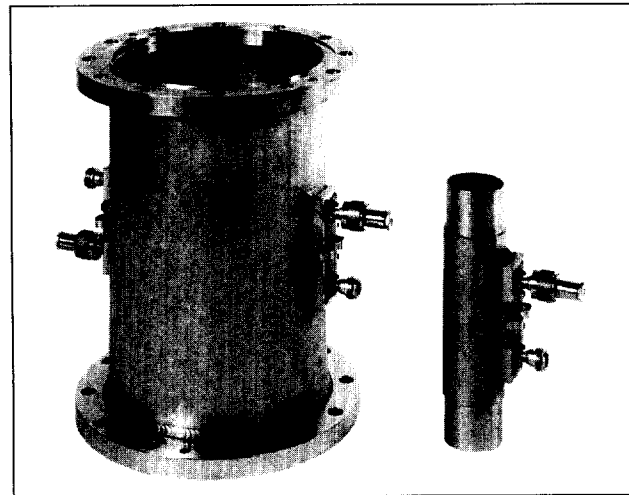


Features

- Low VSWR
- Broad Frequency Range
- High Directivity
- Broad Coupling Range
- Field Replaceable
- Compact Design
- Light Weight
- Any Coax Line Size

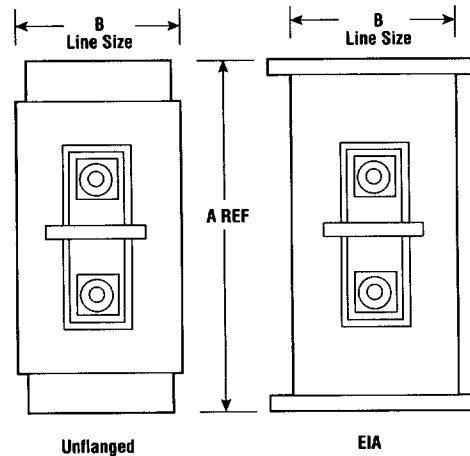
CD Series Coaxial Directional Couplers

These loop couplers are designed, manufactured, and laboratory compensated for any coupling value between -30 dB and -60 dB for any channel in the VHF-FM-UHF bands. The highly directive coupling loops provide high accuracy in forward and/or reflected power measurements necessary for determining VSWR on the line or other operations.



Specifications

Coupling Range, dB	-30 to -60
Frequency Range, MHz	50-4000
VSWR	1.03 or better
Directivity, dB	30 or greater
Connectors	
Coupler	N, SMA, BNC
Line	EIA, IEC, unflanged
Impedance, ohms	50



Ordering Information

Type No.	Line Size	Flange Type	Number of Directional Couplers	Length, L in (mm)
CD103 (1-2 GHz)	7/8"	7/8" EIA	1	6 (152)
CD104 (2-4 GHz)	7/8"	7/8" EIA	1	6 (152)
CD201	1-5/8"	Unflanged	4	7 (178)
CD202	1-5/8"	Unflanged	2	7 (178)
CD203	1-5/8"	1-5/8" EIA	2	14.5 (368)
CD204	1-5/8"	Unflanged	1	7 (178)
CD205	1-5/8"	Unflanged	3	7 (178)
CD301	3-1/8"	Unflanged	2	6.75 (171)
CD302	3-1/8"	Unflanged	4	6.75 (171)
CD303	3-1/8"	3-1/8" EIA	2	8 (203)
CD304	3-1/8"	Unflanged	1	7.5 (191)
CD305	3-1/8"	3-1/8" EIA	3	8 (203)
CD401	4-1/16"	4-1/16" EIA	3	8 (203)
CD402	4-1/16"	4-1/16" EIA	1	8 (203)
CD403	4-1/8"	IEC50-105	2	8 (203)
CD404	4-1/16"	Unflanged	2	10 (254)
CD405	4-1/16"	4-1/16" EIA	2	8 (203)
CD603	6-1/8"	6-1/8" EIA	1	10 (254)
CD604	6-1/8"	Unflanged	1	10 (254)
CD605	6-1/8"	6-1/8" EIA	2	10 (254)
CD606	6-1/8"	6-1/8" EIA	3	10 (254)